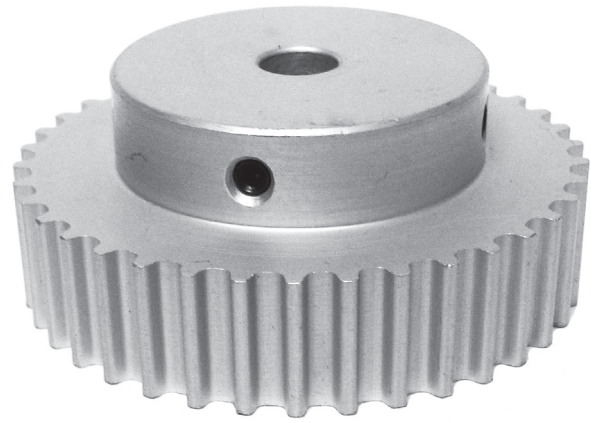
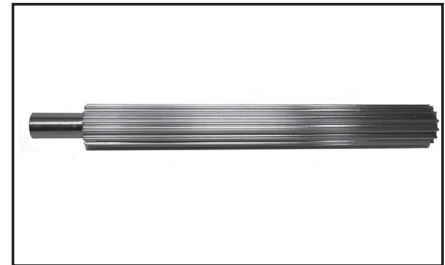
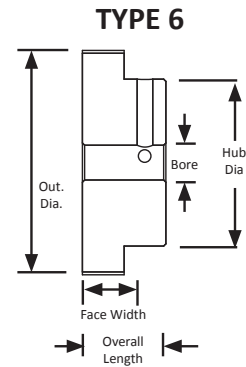


# POWERHOUSE™ HTD® TIMING PULLEYS

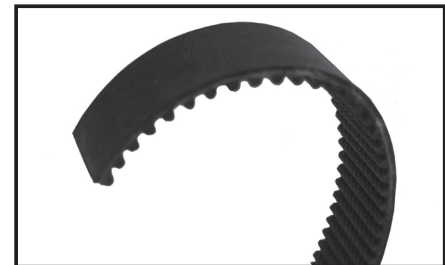
5 mm Pitch  
For 9 mm Wide Belts  
Hub and No Flanges  
Aluminum  
Clear Anodized  
Finished Bore



Part Number	No. of Teeth	Type	Pitch Dia. (in)	Out. Dia. (in)	Bore (in)	Face Width (in)	Overall Length (in)	Hub Dia. (in)	Set Screw
12-5M09-6A3	12	6	0.752	0.707	0.250	0.546	0.796	0.437	1 x 8-32
13-5M09-6A3	13	6	0.815	0.770	0.250	0.546	0.796	0.500	1 x 8-32
14-5M09-6A3	14	6	0.877	0.832	0.250	0.546	0.796	0.500	2 x 8-32 @ 90°
15-5M09-6A3	15	6	0.940	0.895	0.250	0.546	0.796	0.563	2 x 8-32 @ 90°
16-5M09-6A3	16	6	1.003	0.958	0.250	0.546	0.796	0.563	2 x 8-32 @ 90°
17-5M09-6A3	17	6	1.065	1.020	0.250	0.546	0.796	0.625	2 x 8-32 @ 90°
18-5M09-6A3	18	6	1.128	1.083	0.250	0.546	0.796	0.687	2 x 8-32 @ 90°
19-5M09-6A3	19	6	1.191	1.146	0.250	0.546	0.796	0.750	2 x 8-32 @ 90°
20-5M09-6A3	20	6	1.253	1.208	0.250	0.546	0.796	0.812	2 x 8-32 @ 90°
22-5M09-6A3	22	6	1.379	1.334	0.250	0.546	0.796	0.937	2 x 8-32 @ 90°
24-5M09-6A3	24	6	1.504	1.459	0.250	0.546	0.859	1.000	2 x 8-32 @ 90°
25-5M09-6A3	25	6	1.566	1.521	0.250	0.546	0.859	1.000	2 x 8-32 @ 90°
26-5M09-6A3	26	6	1.629	1.584	0.250	0.546	0.859	1.063	2 x 8-32 @ 90°
28-5M09-6A3	28	6	1.754	1.709	0.250	0.546	0.859	1.187	2 x 8-32 @ 90°
30-5M09-6A3	30	6	1.880	1.835	0.250	0.546	0.859	1.187	2 x 8-32 @ 90°
32-5M09-6A3	32	6	2.005	1.960	0.250	0.546	0.859	1.250	2 x 8-32 @ 90°
34-5M09-6A3	34	6	2.130	2.085	0.250	0.546	0.859	1.375	2 x 8-32 @ 90°
36-5M09-6A4	36	6	2.256	2.211	0.313	0.546	0.937	1.500	2 x 8-32 @ 90°
38-5M09-6A4	38	6	2.381	2.336	0.313	0.546	0.937	1.500	2 x 8-32 @ 90°
40-5M09-6A4	40	6	2.506	2.461	0.313	0.546	0.937	1.500	2 x 8-32 @ 90°
44-5M09-6A4	44	6	2.757	2.712	0.313	0.546	0.937	1.500	2 x 8-32 @ 90°
48-5M09-6A5	48	6	3.008	2.963	0.375	0.546	0.937	1.500	2 x 10-32 @ 90°
50-5M09-6A5	50	6	3.133	3.088	0.375	0.546	0.937	1.500	2 x 10-32 @ 90°
56-5M09-6A5	56	6	3.509	3.464	0.375	0.546	0.937	1.500	2 x 10-32 @ 90°
60-5M09-6A5	60	6	3.760	3.715	0.375	0.546	0.937	1.500	2 x 10-32 @ 90°
62-5M09-6A5	62	6	3.885	3.840	0.375	0.546	0.937	1.500	2 x 10-32 @ 90°
70-5M09-6A5	70	6	4.386	4.341	0.375	0.546	0.937	1.500	2 x 10-32 @ 90°
72-5M09-6A5	72	6	4.511	4.466	0.375	0.546	0.937	1.500	2 x 10-32 @ 90°



For 5 mm POWERHOUSE™ HTD® pitch pulley stock and flanges, see page 296.



For matching 5 mm POWERHOUSE™ HTD® pitch belts, see page 262.